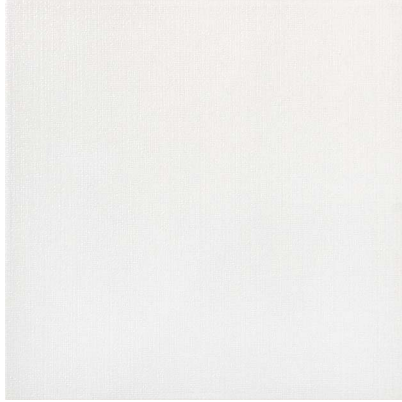


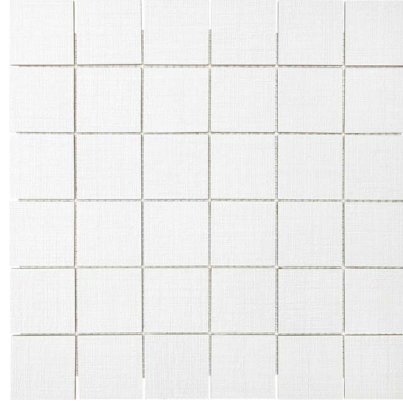
ROCOCO PORCELAIN TILE



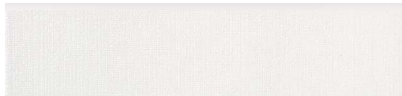
## ROCOCO PORCELAIN TILE



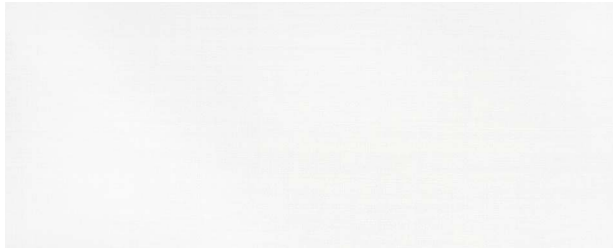
13" x 13" ROCOCO WHITE PORCELAIN TILE  
63-236



2" x 2" ROCOCO WHITE MOSAICS  
63-244



3" x 13" ROCOCO WHITE BULLNOSE  
63-237



8" x 20" ROCOCO WHITE WALL TILE  
57-001

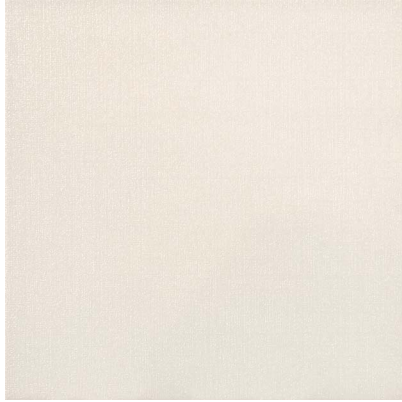


3" x 8" ROCOCO WHITE BULLNOSE  
57-002

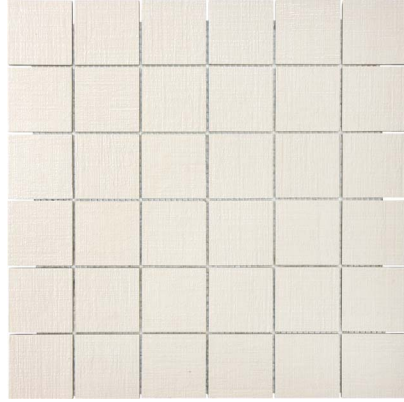


2" x 20" ROCOCO WHITE LISTELLO  
57-003

## ROCOCO PORCELAIN TILE



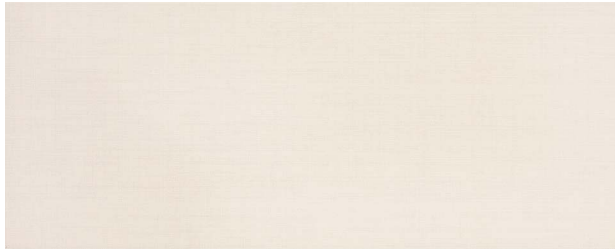
13" x 13" ROCOCO BEIGE PORCELAIN TILE  
63-238



2" x 2" ROCOCO BEIGE MOSAICS  
63-245



3" x 13" ROCOCO BEIGE BULLNOSE  
63-239



8" x 20" ROCOCO BEIGE WALL TILE  
57-004

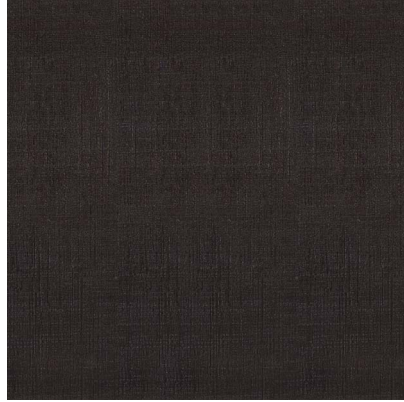


3" x 8" ROCOCO BEIGE BULLNOSE  
57-005

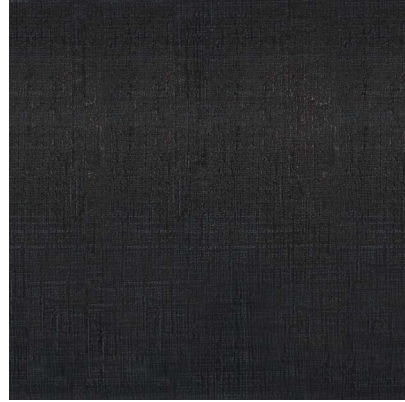


2" x 20" ROCOCO BEIGE LISTELLO  
57-006

## ROCOCO PORCELAIN TILE



13" x 13" ROCOCO MOCHA PORCELAIN TILE  
63-240



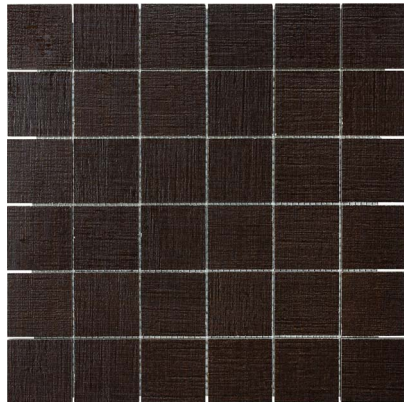
13" x 13" ROCOCO BLACK PORCELAIN TILE  
63-242



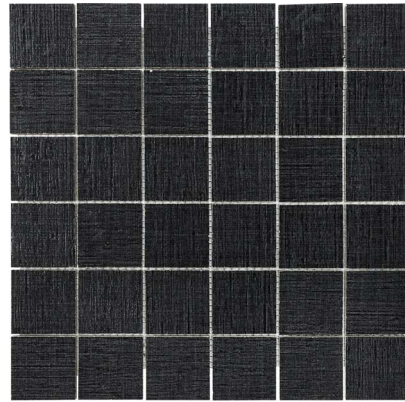
3" x 13" ROCOCO MOCHA BULLNOSE  
63-241



3" x 13" ROCOCO BLACK BULLNOSE  
63-243



2" x 2" ROCOCO MOCHA MOSAICS  
63-246



2" x 2" ROCOCO BLACK MOSAICS  
63-247

## ROCOCO PORCELAIN TILE

### PACKAGING INFORMATION

DESCRIPTION	ITEM CODE				LBS/BOX	PCS/BOX	SQFT/BOX	BOXES/SKID	SQFT/SKID
	WHITE	BEIGE	MOCHA	BLACK					
13" x 13" ROCOCO PORCELAIN TILE	63-236	63-238	63-240	63-242	52.59	13	15.28	46	702.88
8" x 20" ROCOCO WALL TILE	57-001	57-004	n/a	n/a	45.25	15	16.14	48	774.72
2" x 20" ROCOCO LISTELLO	57-003	57-006	n/a	n/a	10.43	12	n/a	52	624 pcs.
3" x 13" ROCOCO BULLNOSE	63-237	63-239	63-241	63-243	29.19	30	n/a	60	1800 pcs.
3" x 8" ROCOCO BULLNOSE	57-002	57-005	n/a	n/a	11.53	25	n/a	150	3750 pcs.
2" x 2" ROCOCO MOSAICS	63-244	63-245	63-246	63-247	38.54	10	11.74	48	563.52

### GENERAL SPECIFICATIONS

DESCRIPTION	METHOD	UNIT	13" x 13"
THICKNESS		mm – in	7.8 mm – 5/16"
WATER ABSORPTION	EN ISO 10545-3	( % )	≤ 0.5
ABRASION RESISTANCE	EN ISO 10545-7	(PEI)	3 - 4*
SCRATCH HARDNESS		(Mohs)	6
BREAKING STRENGTH	EN ISO 10545-4	(lbf)	≥ 300
CHEMICAL RESISTANCE	EN ISO 10545-13	(GL)	Class A – Resistant
FROST RESISTANCE	EN ISO 10545-12		Resistant
STATIC COEFFICIENT OF FRICTION (WET)	ASTM C-1028	(μ)	≥ 0.80
STATIC COEFFICIENT OF FRICTION (DRY)	ASTM C-1028	(μ)	≥ 0.90
DCOF (WET)	ANSI B101.3		≥ 0.50
SHADE VARIATION			V1

\* Additional abrasion resistance (pei) information.